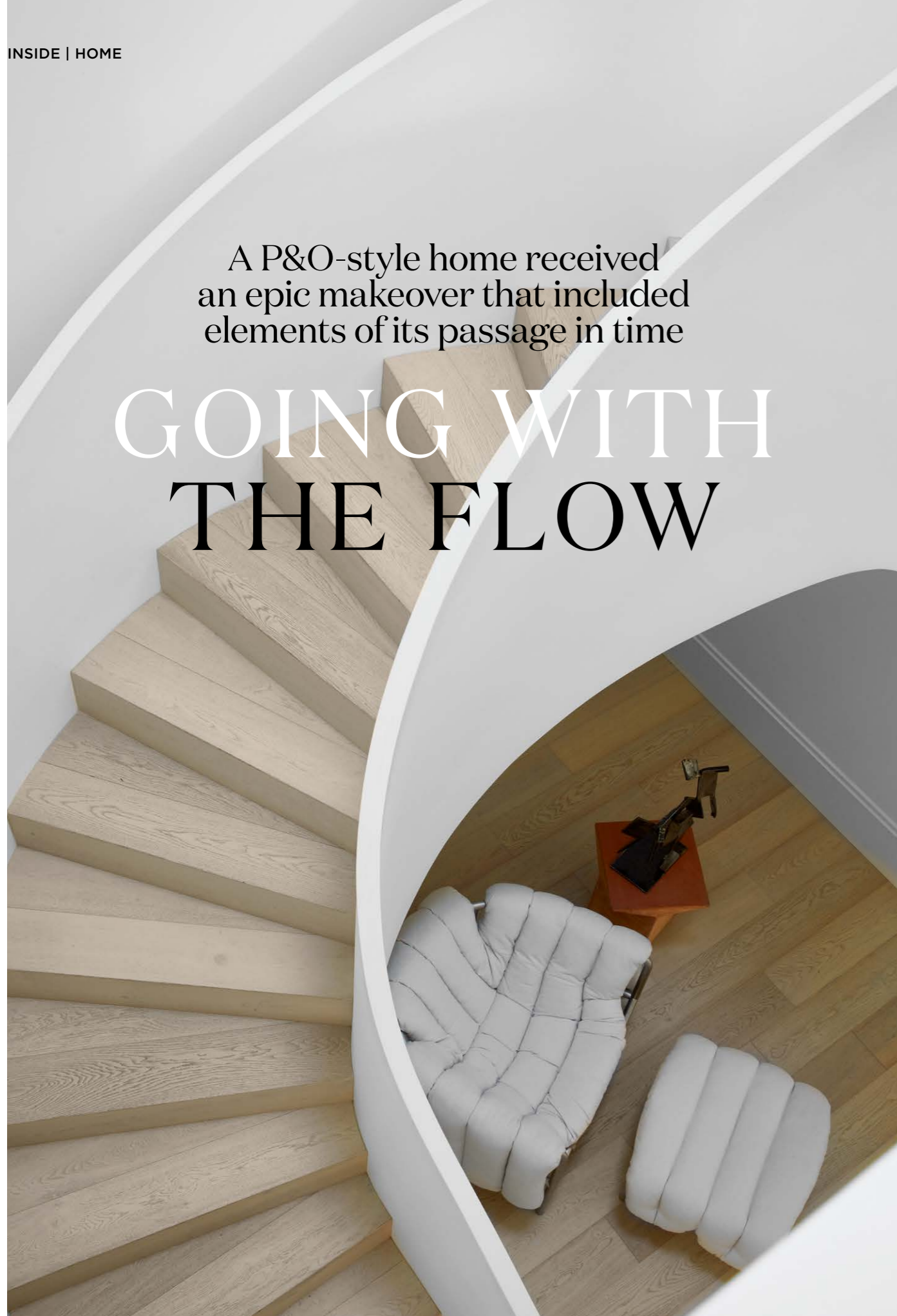


A P&O-style home received an epic makeover that included elements of its passage in time

GOING WITH THE FLOW




WORDS CHRIS PEARSON PHOTOGRAPHY CORRIE BOND STYLING CLAIRE DELMAR

cheat sheet

Who lives here A professional couple with four children aged 11 to 20.

Style of home An updated five-bedroom house with Art Deco features.

Location Sydney's eastern suburbs, traditional land of the Bidjigal and Gadigal peoples.

 The renovation took 10 months, from August 2019 to June 2020.



STAIRCASE (opposite) The home's undulating forms appear in some of the key furniture pieces. Puffy lounge chair and ottoman, District. Pitcher stool, Artedomus. Mild steel sculpture by Caroline Duffy, through Curatorial+Co.

LIVING AREA (this page) In Luna bouclé fabric, the Valley sofa from Jordan can fit the whole family. Primavera stone tables, Manyara Home. Crown stool, Robert Plumb. Mattiazzi 'Medici' chair, District. Table lamp by Sarah Nedovic Gaunt. Sana incense holders by Tom Fereday. Wire sculpture, origin unknown. Oak flooring, Aged Oak Floors. Agra rug, Armadillo.



When the owners bought this luminescent P&O-style home in Sydney's eastern suburbs in 2016, they were wooed by its sweeping curves and svelte steel windows, but the layout left them marooned. Looking for a solution, they

explored various ports of call with architects Potter & Wilson before reaching this idyllic destination.

"I was confronted with a labyrinth of rooms and convoluted circulation, which created dark, enclosed areas with no connection to the garden," says Potter & Wilson principal Imogene Potter. "A cumbersome stair added to the heavy language."

The brief was for a low-maintenance house for a family with four children, now aged 11 to 20, featuring generous living areas as well as spaces for me-time. "We wanted a relaxed, understated home with great breakaway spaces for children entering their teen years," says the owner. "It had to make the most of the northern aspect, with as much light as possible and natural breezes, and to respect and preserve the magnificent P&O architecture that attracted us to it in the first place."

The home occupies a sloping site, with the first floor level with the backyard. When the family moved in, Imogene devised an addition with a vast open-plan space, including living, kitchen and dining areas opening to the pool and garden – but, leading busy lives, the owners mothballed the renovations for three years. "That, however, gave them a clear idea of how they wanted to live in the house and what worked well," says Imogene.

Their biggest change was the location of the kitchen. "The existing kitchen was on the first floor at the front, looking out to park-like views. My clients loved being up in the canopy and having this amazing outlook. So, we kept it there, with the living and dining areas together and adjoining balcony nearby."

To connect to the garden, Imogene created two living areas at the back. One is a covered barbecue and dining area with a dramatic curved roof poised on metal poles reading almost as a cantilever. The other is an open-air lounge with a fireplace. Meanwhile, four of the five bedrooms sit on the lower level.

In order to ensure all areas upstairs and down were bathed in light and had good airflow, Imogene created new openings, but not just any openings. "The curved exterior and ribbon windows attracted my clients, so we kept those elements," she says. "Where we did touch the facade, we used the same window and door vocabulary – the rough-cast rendered, curved walls punctuated with geometric cut-outs."

Imogene also replaced a dark and cramped entry with a more direct route. "The entry sequence is vertical," she says. "With the house backing into a hill and the main living areas on the top floor, it needed a sequence that is inviting, light-filled and easily navigated. We wanted something in keeping with the original style but reading as a contemporary element."

ENTRY (top) The front door has a grandeur befitting a P&O liner. Crittall steel-frame doors, Skyrange. Popham 'Brasilia' tiles, Onsite Supply + Design. Exterior wall, Dulux Silkwort. Studio Italia 'Retro' wall light, Mondoluce.

DETAIL (left) A Dulux Silkwort two-pack finish with rattan inserts was chosen for the sideboard joinery. Curtains by Marrs. Paintings by Robert Brown (large) and Paul Gundry, both from Colville Gallery. **RECEPTION** (opposite) A circular skylight over the staircase enhances the design. Artwork by Marisa Purcell, through Olsen Gallery. Sculpture by Caroline Duffy, Curatorial+Co.

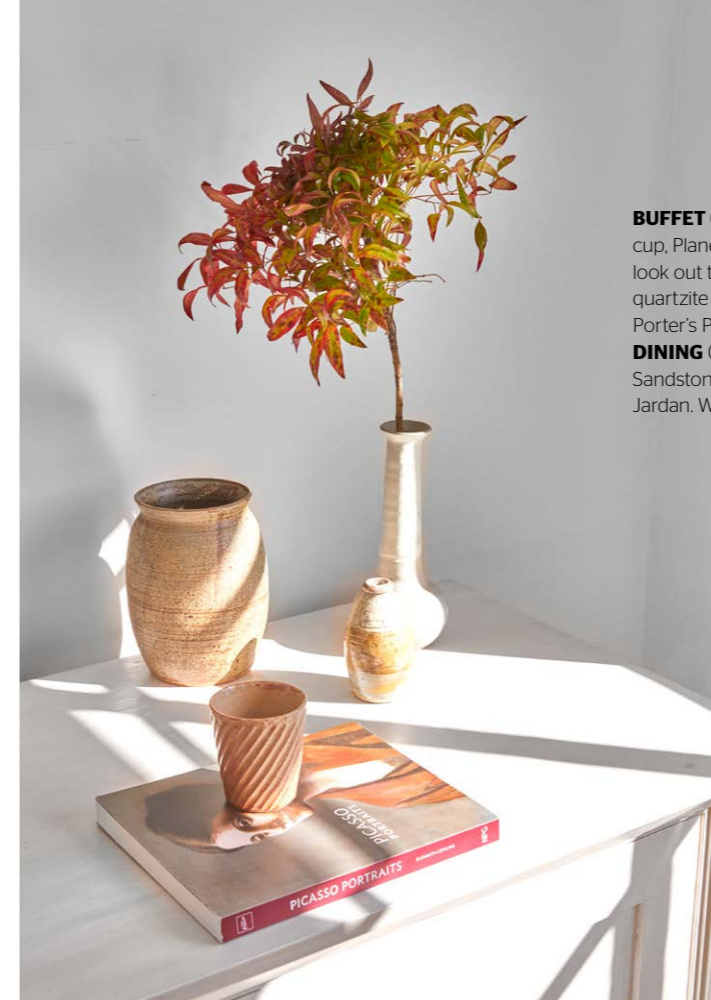


"With its beautiful curved stair and skylight above, the entry sequence is a sculptural element in a house filled with art"

IMOGENE POTTER, ARCHITECT

good news

The redesign kept to the existing footprint and retained most of the perimeter walls and roof structure, which reduced waste. Many external windows and doors (and even some Art Deco taps) were retained, and new thermal insulation was installed in the roof and walls and under the floors. Adding windows and skylights has ensured sufficient natural light and cross-ventilation.



BUFFET (left) This Frank II piece in White Oak came from MCM House. Ceramic cup, Planet. **KITCHEN** (below and opposite) "I love my kitchen and how I can look out through the trees," says the owner. Green benchtop in Smeraldo quartzite from Artedomus. Cabinetry by AJC Design Joinery, handpainted Porter's Paints Grey Gum, with sharknose recessed handles and brass pulls. **DINING** (bottom) A vintage table and chairs sit well with the flooring in Limed Sandstone from Aged Oak Floors. Joinery, Dulux Natural White. Mae pendant, Jordan. Wooden bottle, Space. Skáfos vase, Artedomus. Plate, Robert Gordon.



Classic Crittall doors with steel mullions open to a reception area. From there, curved walls offer glimpses of adjoining areas, washes of light guiding you through the spaces, culminating in a sweeping staircase luring you up to the main living areas. A skylight above drenches the core of the house with daylight.

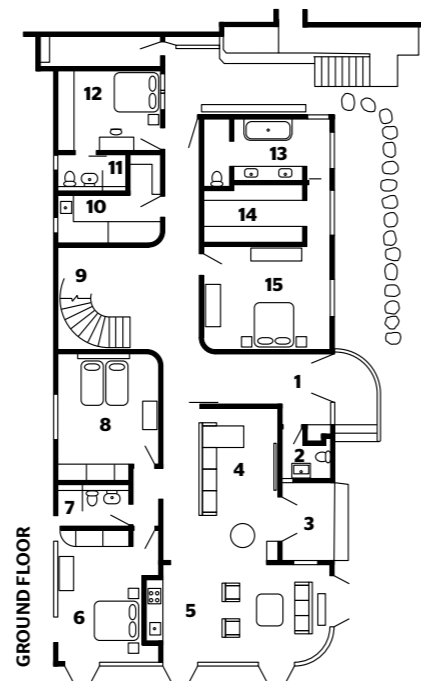
Wishing to keep the interiors clean and uncluttered, Imogene changed the corning in the living areas to a square-set finish, while keeping the original bedroom cornices. The new skirting was also kept simple, at the same height as the original, while shadowlines in the ceilings have neatly obscured curtain tracks.

Pared-back finishes include white walls to emphasise those glorious curves, reflect the light and provide a neutral backdrop for the owners' art collection, while oak flooring in the living areas is a warming counterpoint. "My clients were keen to explore finishes and play with colour, for the bathroom joinery in particular," says Imogene. "Soft greens and blue tiling throughout took their cues from the original bathroom tiles." Brass trims and hardware contrast with new green stone benchtops and coloured cabinetry, while a vast Valley modular sofa from Jordan sums up the furniture selection. It again uses the odd curve or two, and the owner chose most of it herself.

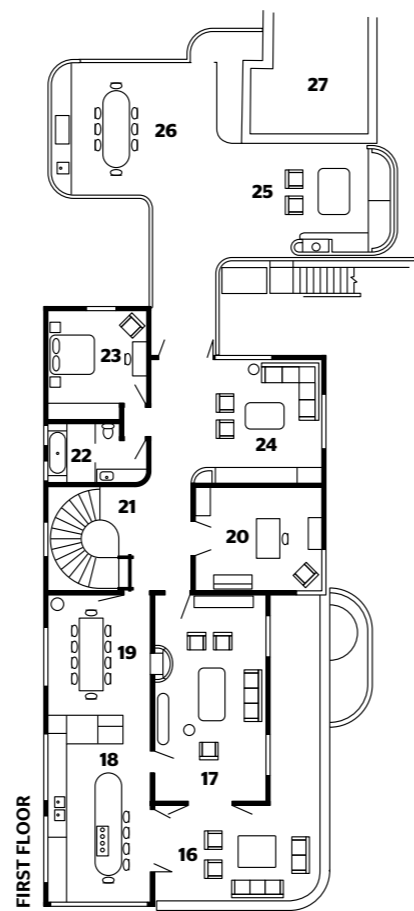
Imogene's pride and joy? "The entry sequence, with its beautiful curved stair and skylight above, is a sculptural element in a house that's filled with art," she says.

This is echoed by the owner, who also nominates her green kitchen and its park-like views. "We entertain a lot, have many parties in the garden, and gather in the kitchen for dinners," she says. "This is a beautiful house to live in – full of natural light and breezes – a living, breathing family machine." Perhaps 'haven' might be a better metaphor. And with this respectful makeover, the prized P&O-style home has found its own safe harbour. **10**
Potter & Wilson is at potterandwilson.com and [@potter_wilson](https://www.instagram.com/potter_wilson)





- 1 Entry
- 2 Powder room
- 3 Garden
- 4 TV room
- 5 Sitting area
- 6 Bedroom
- 7 Ensuite
- 8 Bedroom
- 9 Staircase
- 10 Laundry
- 11 Ensuite
- 12 Bedroom
- 13 Main ensuite
- 14 Walk-in wardrobe
- 15 Main bedroom



- 16 Terrace
- 17 Family room
- 18 Kitchen
- 19 Dining area
- 20 Study
- 21 Staircase
- 22 Ensuite
- 23 Bedroom
- 24 Media room
- 25 Outdoor living
- 26 Outdoor kitchen/
dining area
- 27 Pool

“My clients were keen to explore finishes and play with colour, for the bathroom joinery in particular”

IMOGENE POTTER, ARCHITECT



BATHROOM Tefrazzo alludes to the home's Art Deco origins and adds extra visual interest. Vanity with Carrara top from Artedomus; cupboard doors in Porter's Paints Newport Blue. Maxim 'Calacatta' marble wall slabs, also Artedomus. Fibonacci 'Flannel Flower' wall and floor tiles, and Zellij white wall tiles, Skheme. Happy D2 bath by Duravit. Icon tapware in Aged Brass, Astra Walker. Mezzo light, Spence & Lyda. Crown stool, Robert Plumb. Towels, Polite Society. **HALLWAY** (opposite top) A glimpse of the huge skylight over the staircase. Task stool, District. Classic Cherner chair, stylist's own. Artwork by Marisa Purcell, through Olsen Gallery. **ENSUITE** (opposite bottom) Handmade tiles from Surface Gallery define this bathroom. D-Code sink by Duravit. Textured ceramic vessel by Mel Lumb, Saint Cloche. Forest brass tray, Ferm Living.

MAIN BEDROOM The clients' own bed was incorporated into the scheme. Quilt cover, Hale Mercantile Co. Maison De Vacances cushions, Montmartre Store. Greek Key bedside table, Cafe Lighting & Living. DCW Editions 'Mantis' table lamp, Spence & Lyda. Artwork, vintage. Grey vessel, Tigmi Trading. Walls, Dulux Silkworth. Envy carpet, Fyber. Floor sculpture by Walter Auer.



GREAT FINDS



ADDITIONAL PRODUCT SOURCING: KATE LINCOLN

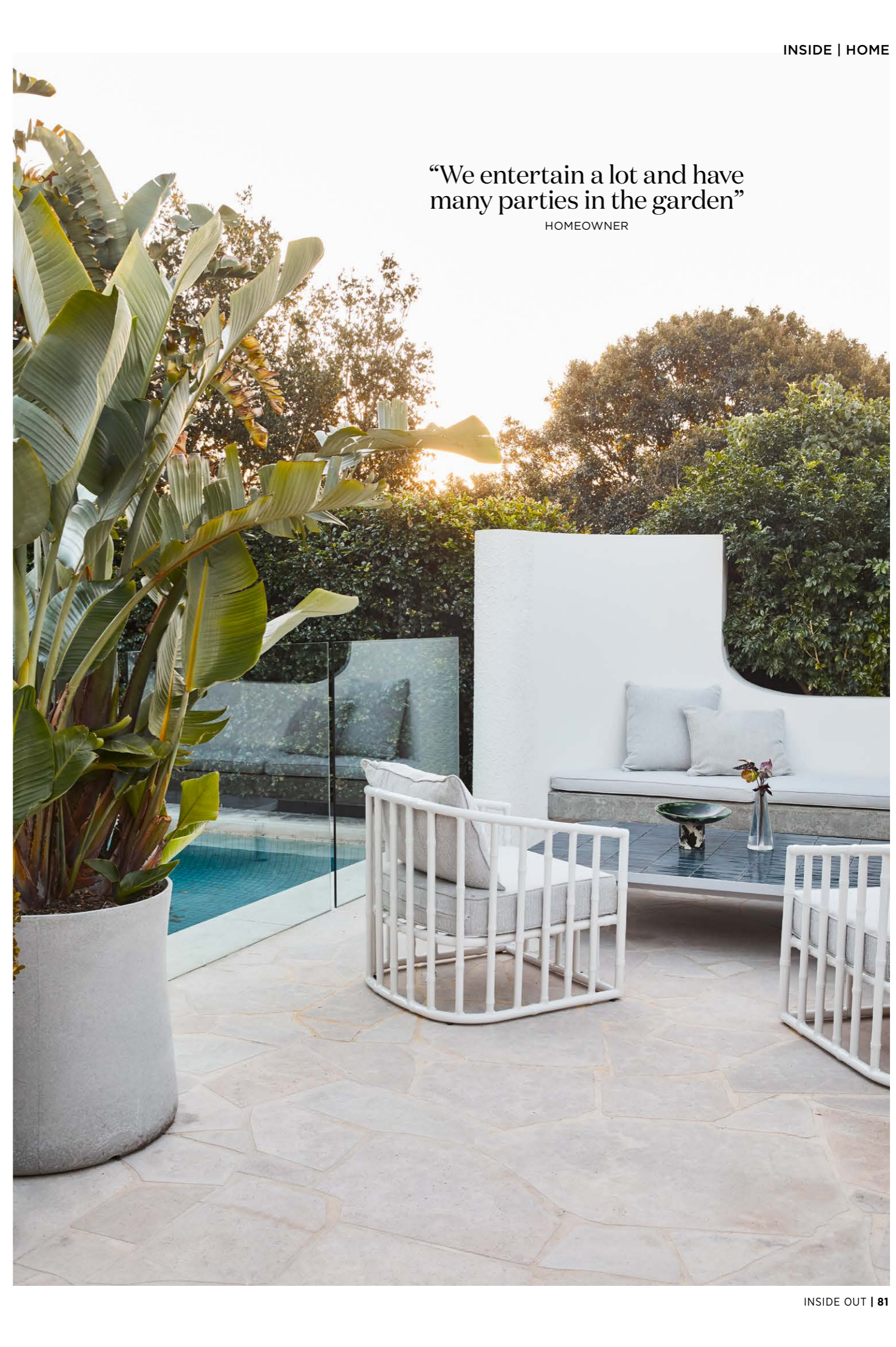
1 Linen **pillowcases** in Slate, \$90 for two, Cultiver. **2** Dulux Wash&Wear **paint** in Lexicon Quarter, \$91.90 per 4L, Bunnings. **3** *The Heart Of It* acrylic-on-linen **artwork** by Marisa Purcell, \$7300, Olsen Gallery. **4** Valley **modular sofa** in Luna fabric, \$18,098, Jordan. **5** Andora wool **rug** in Terrazzo, from \$1440, Armadillo. **6** Pompom **wine glasses**, \$129 for two, Maison Balzac. **7** Smeraldo honed stone **slab**, POA, Artedomus. **8** Kelly Wearstler 'Bayliss' **lamp** in Black with linen shade, POA, Bloomingdales. **9** Hem 'Puffy' **lounge chair**, POA, District. **10** Moss River 'Loft' **towels**, from \$105 each, Polite Society. **11** Half Trumpet sphere **vase** by Kirsten Perry, \$2000, Saint Cloche. **12** Pinwheel **vase** by Kirsten Perry, \$2000, Saint Cloche. **13** Cuero canvas **butterfly chair**, \$1080, In Good Company. **14** Oak **floorboards** in Danish White, POA, Royal Oak Floors. **15** Antique brass **wall spout** and **cross taps**, \$362, Tile Cloud. **16** Lucy **stool/side table**, \$370, Trit House. **17** Fibonacci Stone 'Flannel Flower' **tiles**, POA, Artedomus. **18** Caroma 'Luna' 1400mm back-to-wall **bath** in White, \$2156, The Blue Space.



OUTDOOR LIVING AREA (both pages) The new canopy over crazy paving provides much-needed shade and a home for the outdoor kitchen. Cut-outs in the wall and the detail on the cupboard doors echo the interior's curves. Tiled dining table, made to order. Terracotta stool, Robert Plumb. Bespoke coffee table by Atmosphere Custom Furniture. Armchairs, clients' own.

“We entertain a lot and have many parties in the garden”

HOMEOWNER



LESSONS LEARNT

“If you can be there on site every day of the build, do it!”

HOMEOWNER

“I got my SafeWork NSW White Card so I could troubleshoot on the spot. We had no unwanted variations, no misunderstandings.”



GARDEN Beside the pool, a large stretch of lawn gets plenty of use. When it's cold, the area in front of the Escea EW5000 fireplace is where everyone wants to be. Swisspearl grey concrete-like 'Sushi Pot' planters from Robert Plumb. Butterfly chair with black canvas cover, Angelucci 20th Century.